

Data Section: Company Profile/Stock Status

Company Profile (as at March 31, 2022)

Company Name	Hirata Corporation
Headquarters	111 Hitotsugi, Ueki, Kita, Kumamoto, 861-0198 Japan
Representatives	Yuichiro Hirata, President
Date Established	Dec. 29, 1951
Fields of business	Manufacture and sales of various manufacturing line systems, industrial robot and logistic equipment
Capital	2,633 million yen
Employees	Consolidated 2,233 Non-Consolidated 1,350
Accounts Closed	Mar. 31
Stock Exchange Listings	Tokyo Stock Exchange Prime Market (from April 4, 2022)

• Domestic branches

Headquarters/Kumamoto plant	Kanto plant
Kumamoto east plant	Kansai plant
Kusuno plant	Tokyo office
Shichijo plant	

• Subsidiaries

Taihei Technos Co., Ltd.
Trinity Inc.
Hirata Field Engineering Co., Ltd.
Hirata Corporation of America (USA)
Hirata Engineering S.A.de C.V (Mexico)
Hirata Engineering Europe GmbH (Germany)
Hirata FA Engineering (S) Pte. Ltd. (Singapore)
Hirata Engineering (Thailand) Co., Ltd. (Thailand)
Hirata FA Engineering (M) Sdn. Bhd. (Malaysia)
Hirata Automated Machinery (Shanghai) Co., Ltd. (China)
Hirata TSUSHO (Shanghai) Co., Ltd. (China)
Taiwan Hirata Corporation (Taiwan)



Headquarters/Kumamoto plant



Kumamoto east plant



Kanto plant



Kansai plant

Stock Status (as at March 31, 2022)

• Stock information

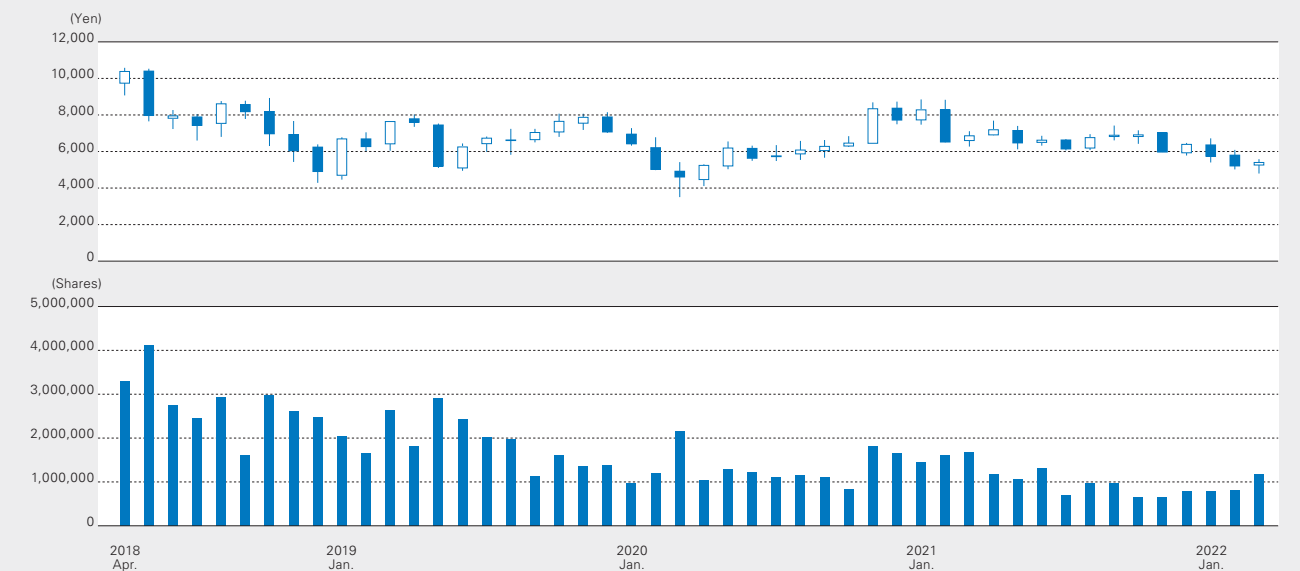
Authorized Number of Shares	37,000,000 shares
Issued Number of Shares	10,756,090 shares
Number of Shareholders	10,731

• Major Shareholders

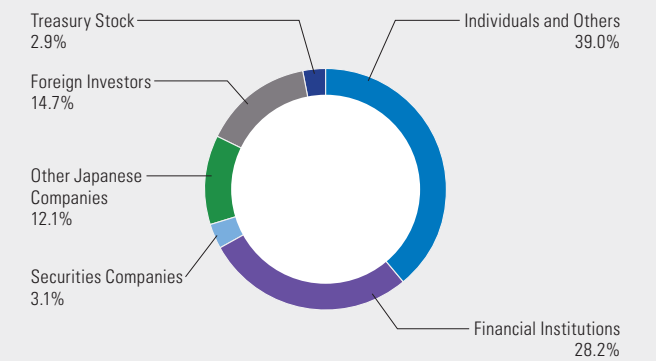
Name/Company Name	Number of Shares Held (Shares)	Percentage of Shares Held (%)
The Master Trust Bank of Japan, Ltd. (Trust Account)	1,069,900	10.24
SMC Corporation	500,000	4.79
Higo Bank, Ltd.	456,000	4.37
STATE STREET BANK AND TRUST COMPANY 505025	455,400	4.36
Custody Bank of Japan (Trust Account)	422,600	4.05
Mizuho Trust & Banking Co., Ltd. Securities management trust 0700096	400,000	3.83
Yuichiro Hirata	291,600	2.79
NIKKON Holdings Co., Ltd.	272,400	2.61
Hirata Corporation Employees Stockholdings	265,410	2.54
SANYO DENKI CO., LTD.	192,900	1.85

Note: In addition to the above, the Company holds 310,711 treasury shares. The shareholding ratios are calculated after deducting treasury shares.

• Stock price/trading volume (In the months April 2018 to March 2022)



• Distribution of Shares by Shareholder



• Distribution of Shares by Number of Shares

